



# Portaferry Cohousing

December 2021 • [www.portaferrycohousing.org](http://www.portaferrycohousing.org)

**Portaferry Cohousing** is located on the Cloughey Road. Our vision is to create a cohousing project that demonstrates **sustainable design** and supports a **rich community life**.



We aim to build **energy efficient** homes suitable for an **intergenerational** mix of households and incomes, designing in shared spaces including a **common house**, safe **play areas**, **wildlife** habitats and **growing space**. We hope it will act as a catalyst and inspiration for others.

**Cohousing** is a form of collaborative community led housing that offers residents a strong sense of neighbourhood and community, where residents know their neighbours well, and **actively participate** in the decision making around the **design, development & management** of the community. There are 18 cohousing projects in the UK, but none so far in NI.

## Who We Are

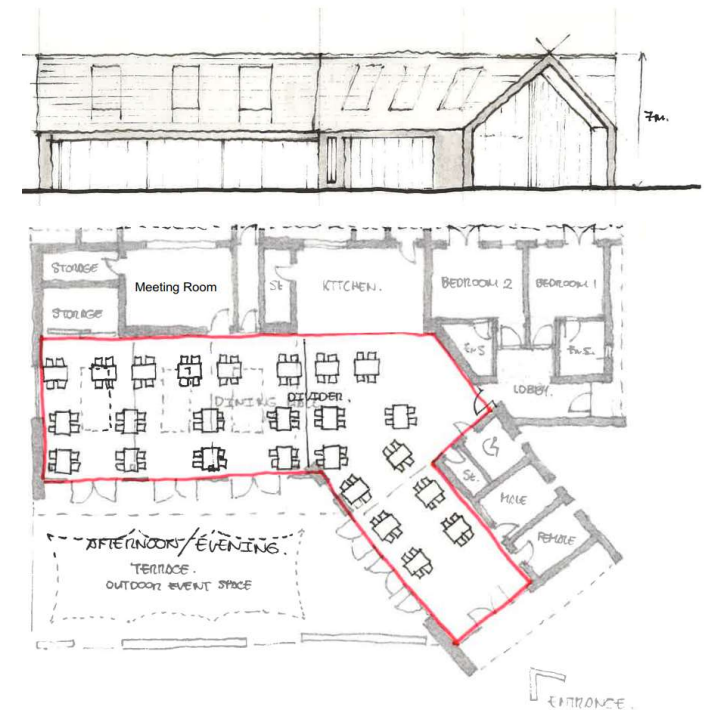
We are in the process of setting up Portaferry Cohousing Limited, a **not for profit company**, run by the members, which will own and manage the common space. We have no links to the Housing Executive or Housing Associations. We have 10 group members, with backgrounds in, engineering, boat building, international aid, music, marketing & furniture design.

## Design

We have purchased a site of **13 acres** and will use the majority for the cohousing project, with the remainder for a 17 unit detached and semi-detached housing development. The cohousing project will consist of **32 residential self-contained homes**, consisting of a **mix of 1 to 4 bedrooms, detached, semi-detached and terrace homes**. The site is predominately pedestrianised, with the houses clustered to leave shared open space.

The **homes will be privately owned** and we envisage that some will be available for private rental. A **common house** will be the focal point of the neighbourhood where meals are shared together once per week. The common house will consist of a kitchen, function/dining room, two bedrooms and an office.

Common house preliminary design -







TREES – 1200+ newly planted, 95% native species. Retention of existing trees

PEDESTRIANISED, after parking areas, to create a safe and social environment

Shared food GROWING area, polytunnel

COHOUSING DEVELOPMENT – 32 residential self-contained homes, consisting of a mix of 1 to 4 bedrooms, detached, semi-detached and terrace homes

Willow area for nature walks



Area Dedicated for Re-wilding

9m Water Main Wayleave

9m Water Main Wayleave

9m Water Main Wayleave

HOUSING DEVELOPMENT – 17 unit detached and semi-detached housing development

Common House

Terrace

Play Area

Shared Garden Area

Polytunnel

Tank

Nature Walk

Willow

Food Forest

Food Forest

Hedge facing Cloughey Rd

Access to Cohousing Development

Access to Housing Development

COMMON HOUSE – focal point, where meals are shared together once per week. Kitchen, function/dining room, two bedrooms and office

Preliminary design for community consultation. Comments welcome. portaferrycohousing@gmail.com Formal planning application spring 2022.